
Quick Operation Guide

Step 1 Install SIM Card.

A. Make sure the SIM card is with 2G service still if you are using 3G or 4G SIM cards. Make sure the SIM card is with both gsm sms and gprs service even you don't want to use online tracking platform. Make sure the SIM card is with Call ID service also.

B. Make sure SIM with metal face top, clipped icon to the right as below. Or follow the SIM

direction sticker on the device to operate!

C. For Portable Trackers (T12/T4400/T8800/T15400;TK05/TK10/TK15/TK20), insert SIM and you will see GREEN light flash once and then turn to on for 30 second, trackers will be on directly, don't need press the button again. For Installed Trackers(T0024/T0080/T1024/T805/T5124/T3124

/T3180/T2024), once complete install and get power with car battery, trackers will be on also. For other trackers(T16/T18/T18H/T10/C20T/C30T), pls kindly refer to the user manual.

D. Call Device's SIM phone number and make sure it could get through but without answer.!



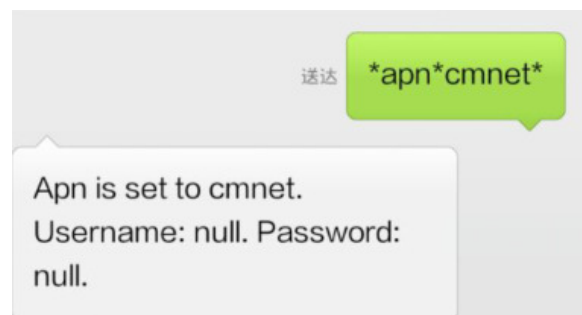
Step 2 Set APN (Access Point Name).

This setting is to enable tracker to upload data to the server through GPRS!

A. Different Telecom provider has different APN. Please confirm APN setting on your SIM operator's website or call your SIM operator directly. E.g. Vodafone APN:live.vodafone.com (Some time APN will include username and password)!

B. Use your cellphone to send SMS `*APN*Axxx*Bxxx*Cxxx*` to the SIM number in the device.

Axxx refer to APN, Bxxx refers to username, Cxxx refers to password. If there is no username and password required, just leave Bxxxxx*Cxxxxx* as blank. ! Axxx, Bxxx, Cxxx are just samples, don't send this sms directly!



C. Your cellphone will receive SMS reply, says the appointed APN is set (See screenshot as below).

Notes:!

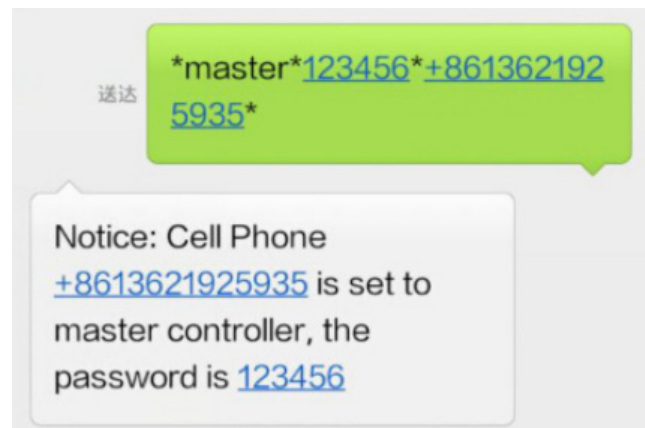
1. No matter what APN settings you send to the device, system will reply reply as what you set. But it doesn't mean the device has connected to server successfully. You have to finish the second step to make sure the APN settings is correct.!

2. The APN setting is for the SIM card inside the gps tracker, not for your own master control cellphone number. Especially, when the SIM card inside the tracker and the SIM card inside your master control cellphone are from two different operator, and you mess them up, then you can't see the device work at all.

3. Step 3 Set Master Number.

A. Use master control cellphone to send SMS `*master*123456*+country code and your cellphone number*` to the device Sim number!

B. Your cellphone will receive reply says mater phone number is successfully set. And you cellphone number will be the only master phone to the tracker (See screenshot as below).



Notes:

1.on above photo, +86 is our country code, pls replace it to your own country code; 13621925935 is the cellphone number which is sending sms to the tracker SIM phone, not the tracker SIM phone number. Don't mess it up!

2.123456 is the default password, it can be changed by SMS command after the registration.

3.“+” symbol is necessary before the country code so that server is able to tell where the data is coming from. E.g. +1 for US, +44 for UK , +39 for Italy!

4.If there is no sms reply. Pls kindly double check: whether APN settings is not correct, please contact the SIM operator to confirm APN settings again; whether the tracker is with signal now, pls kindly call it; whether the SIM card is with 2G service still, pls contact with your operator.

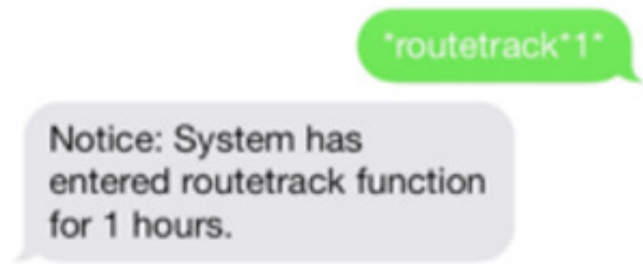
Step 4 Enable the data upload function.

A.Use cellphone to send SMS `*routetrack*1*` for 1 hour data upload, 6 locations per minute when device is moving; Or use cellphone to send SMS `*checkm*10*`, tracker will upload 1 data each 10 minutes both stationary or moving.

(For other command you need to test, please see details in the user manual.)

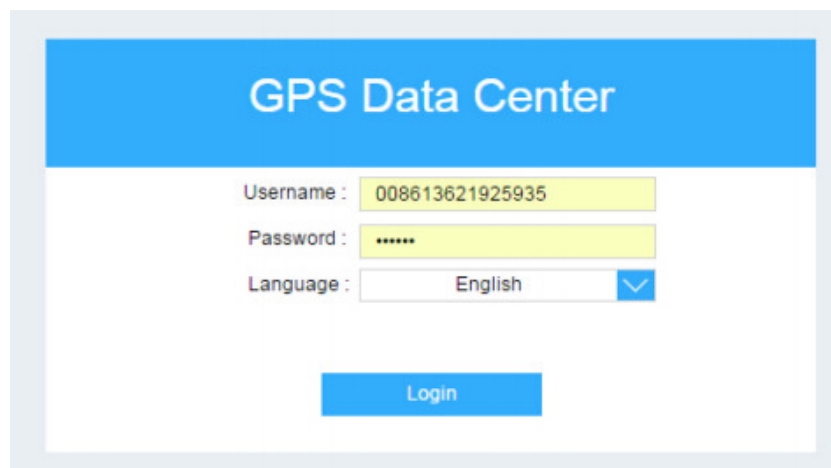
Step 5 Send sms to get tracker's location.

- A. If send *locate*,it will reply coordinates; if send *locataddress*,it will reply address; if send *locatemap*,it will reply google map link.

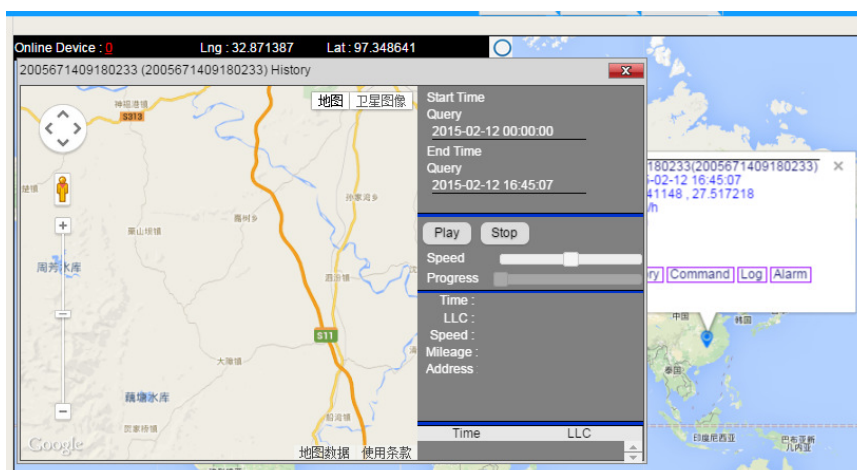


Step 6 See tracking information on-line!

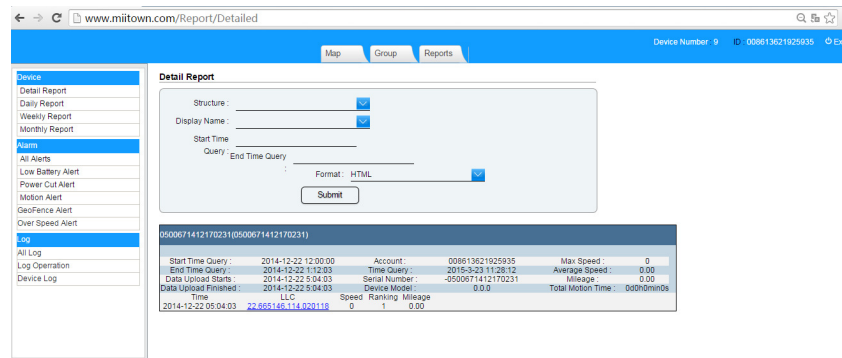
- A. Visit website: www.miitown.com
B. Login with master number (with 00country code) and default password 123456. (See screenshot as below) ,Replace the 00 to + on the master control number. Eg, if set master control number +8613621925935, then login in with : 008613621925935



- C. All trackers under the same master phone number will be shown under the device list!
D. Click history on the pop up info window, chose the date and time you need you view, and click Play to view the tracking history of the appointed time.



E. Click report, chose the device, date and time you need you view, and click submit and you will see the detail tracking report



FAQ when usage:

1. Can your gps trackers work in our country

Answer: Yes, it can. As long as your country has regular 2G GSM network. If you use 3G SIM card or 4G SIM card, before testing, make sure it has 2G GSM service.

2. When I send SMS to it, it don't reply GPS location, only LBS location.

Answer: your gps tracker is indoor? Please make sure it's outdoor. No heavy rain, then the signal is good. Still LBS location? Then, pls send *0000* or *status* to check its status, and see how many satellites quantity it have now.

3. How does the command *sleepv* work?

Answer: once the device receive the sms command *sleepv* and keep stationary for over 3 minutes. The device will go to sleep right now. Once it device the motion or vibration, it will wake up directly and keep awake for 12minutes. After 12 minutes, it will go to sleep again, don't care whether the device is moving or stationary. However, if after this 12 minutes, it detect motion again, it will wake up again, then keep wake still. (As usual, it takes around 1-3 minutes to wake up from sleeping mode)

4. Under *sleepv* mode, does the gps and gsm module work still?

Answer: No. Both GSM and GPS don't work. When you send sms or call the device, no answer at all. Only when the device detect motion, it will wake up and send you the location. Therefore, if you are using the signal detector to detect it, nothing found at all.

5. Under *sleep*3*, does the gps and gsm module work?

Answer: No. Both GSM and GPS are off. When you send sms or call the device, no answer at all. It only wake up after 3 hours later.

6. Under *sleep*3*,will the gps wake up if detect motion or vibration?

Answer: No.It won't. It will only wake up when the time is upto 3 hours.

7. Can I wake the gps up remotely if under deep sleeping mode eg: *sleepv* or *sleep*3*

Answer: No, it can't wake up remotely. *sleepv* only wake up when it detect motion; *sleep*3* only wake up after 3 hours. Can't wake the GPS trackers by sms remotely. However, if you press the "on" button for 10 times by hand to wake the device up

8. When I set sleeping mode for my GPS, then power off the device, and power on again , can it remember the old setting?

Answer: Yes, it can. However, it will stay " awake" for 12 minutes because it treat you "power on/off" as motion. After 12 minutes, it will login into sleep mode again.

9. What does " routetrack" command mean?

Answer: routetrack default setting is: collecting interval = 10seconds, and uploading interval=60seconds,it means it will upload 6 pieces of location each 1 minute, but it will work only when the device is moving. If you want to set the routetrack function detailed, please kindly use rsampling and rupload command.

If you set *routetrack*1*, it will upload 6 pieces of locations in each 1 minutes when the device is moving, and keep this kind of working mode in the follow 1 hours. If you set *routetrack*2*, it will upload 6 pieces of locations in each 1 minutes when the device is moving, and keep this kind of working mode in the follow 2 hours If you set *routetrack*99*,t will upload 6 pieces of locations in each 1 minutes when the device is moving, and keep this kind of working mode forever.

10. What's the difference between "routetrack" and "rsampling" / "rupload"

Answer: routetrack is a rough setting with collecting interval = 10seconds, and uploading interval=60seconds. However, rsampling is used to set the detailed collecting interval, and rupload is used to set the detailed upload interval.

11. T16/T18/T18H bike lamp GPS looks bad because it will attractive the bike theft notice, we want it to be a faulty lamp always, Can I ?

Answer: yes, just press the "on/off" button for 3 times to turn off the light always.

Does your device has the identifies function for its inserted SIM card?

Answer: yes, when the SIM card is moved out, and insert a new SIM card, it will send a alert to the master controller number: mobile 0000000000000000(device SN number) has changed to this phone number.

12. Hong long can the battery last?

Answer: pls kindly check our battery testing report here. All of our device are using the same battery, the only different is the capacity.

<http://www.vjoycar.com/Company-News/tk-star-gps-tracker.html>

13. What's the battery current?

Answer: when gps tracker is under standby mode, its current is 2-3mA;

When GPS is working, the current is 50-80mA;

When it's uploading data, the current is 100-200mA.

14. Can I combine your gps trackers on our own web tracking platform?

Answer: yes, of course, if you need, pls kindly contact with us to ask for our hardware communication protocol.

15. Do your GPS device support UDP protocol? What's the format to transfer the default IP from your server to our server?

Answer:

Yes, our device support both UDP and TCP protocol. If you need,pls contact with our sales to ask for hardware communication protocol.

Besides, the format sample is as below: If your server is:

IP: 89.207.145.86

Port: 2045

Then the command is:

*setip*89*207*145*86*2045*

Please pay attention: once you transfer the default server from ours to your own, it can't be changed back again. It's single travel change.

16. Do your GPS tracking devices have CE certifications?

Answer: yes, all of our gps trackers have passed testing from HEALTH,SAFETY,RF1, RF2 to RADIO, and got CE certifications. Please kindly contact with us to ask for CE certifications and detailed testing reports.

17. Can you only sell your GPS trackers to our company in our Country. Eg, Denmark, Poland, Netherlands, Brazil, Chile, Mexico?

Answer: sorry, no, we don't set sole distributors currently now. Because we have many old clients worldwide already especially in Europe and Southern American Countries.

18. Could you print our company label for us? Print our logo on the device?

Answer: yes, we could print your company label and paste on our device & gift box package, MOQ = 20pcs; we could print your company logo on the device , MOQ = 100pcs.

19. How long can i charge the gps device?

Answer: when you insert the charge, the LED light will be on, it means the device is charging; when it's full charged, the LED light will be off. For your reference, below is the charging table if you use 5V /1A adaptor:

TK05	5000×1.3	÷1000	= around 7 hours
TK10	10000×1.3	÷1000	= around 13 hours
TK15	15000×1.3	÷1000	= around 20 hours
TK20	20000×1.3	÷1000	= around 26 hours
T13	3000×1.3	÷1000	= around 4 hours
T10	2200×1.3	÷1000	= around 3 hours
T18	2200×1.3	÷1000	= around 3 hours

20. How can I know the device battery level?

Answer: when the device is at your hand, if you press the button on, the LED light will show the battery level. When the device is not at your hand, you could send *status* to know its battery level. If you active *uploadalert*on*, you could see the battery level on the server platform also.

21. What's the battery life?

Answer: the battery life is based on the working mode. Eg, if routetrack is on or only under sleeping mode, then the battery life will be very different. For detailed battery life,pls kindly check our battery testing result:

http://www.vjoycar.com/Up/day_150101/Product%20Specification%20List.pdf

22. Does T12 have microphone, support voice monitor remotely?

Answer: Yes, all of our portable device has been built in microphone and support voice monitor remotely include T12/T4400/T8800/T15400/TK05/TK10/TK15/TK20.

Audio Monitoring Call in	*callin*	call the device to start listening within 30mins after the SMS is sent.
Audio Monitoring Call back	*callback*	The device will call the master phone number and enabling the Maser Controller to listen when the call is accepted.

23. Do the portable gps tracker have overspeed alert?

Answer: No, all of our portable device don't have over speed alert include T12/T4400/T8800/T15400/TK05/TK10/TK15/TK20.

24. How much data will the gps use in one month?

Answer: As usual, one piece of data is around 1KB. If you active the routetrack and drive the vehicle always, 50M is enough for one month.

25. When I register master control phone number, it shows " register failure, no gprs..."

Answer: it means the SIM card inside the gps is without GPRS function. Pls kindly contact with your SIM card operator and active the GPRS function.

26. How to reset the GPS? How to back to factory setting?

Answer: pls kindly send 88888888 or *default* to reset the device.

27. How to reset the GPS? How to back to factory setting?

Answer: pls kindly send 88888888 or *default* to reset the device.

28. It reply a SMS In Chinese sometime?

Answer: It's not our Chinese, it's a software bug. We will try to improve it,pls kindly ignore it in advance, and resend the sms,it will reply the right sms.

29. I have set the master control and apn, but can't see the gps online,why?

Answer: 1) Did u set the right master control number? If master control number is set succeed, you could login into our web platform or app, unless, can't login; 2) Did you set the right apn?If apn is not set succeed, it won't reply. Maybe when u send the apn sms, it reply u, it just means the sms is sent succeed, not means the apn is correct. Pls kindly contact with your operator and make sure it's correct. 3)Did u active the check or routetrack function? They will make the device send data to server, then you could see device on the platform.

30. I have set the master control and apn, but can't see the gps online,why?

Answer: 1) Did u set the right master control number? If master control number is set succeed, you could login into our web platform or app, unless, can't login; 2) Did you set the right apn?If apn is not set succeed, it won't reply. Maybe when u send the apn sms, it reply u, it just means the sms is sent succeed, not means the apn is correct. Pls kindly contact with your operator and make sure it's correct. 3)Did u active the check or routetrack function? They will make the device send data to server, then you could see device on the platform.

31. How can I configure just for night alerts (sms or call) for example: from 20:00 to 8:00 in the morning?

Answer: First of all, our device default time is Greenland time(UK time).If you are not in time, you need set the time zone. The sms format is *timezone* your local time* eg, in China, we send sms *timezone*8*. Secondly, set the sms *continuousalert*20*08*